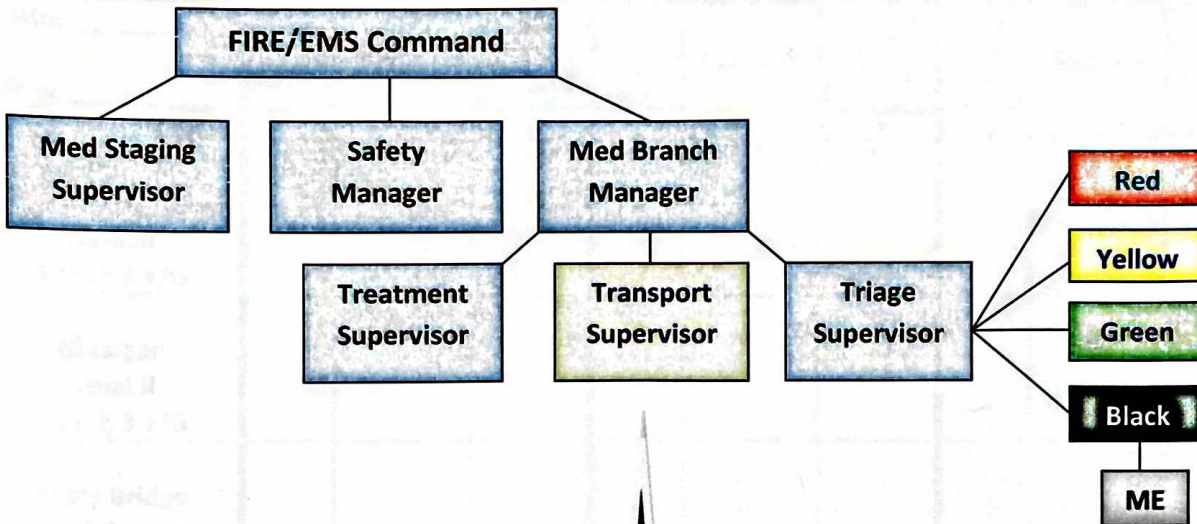


Pierce County MCI Plan

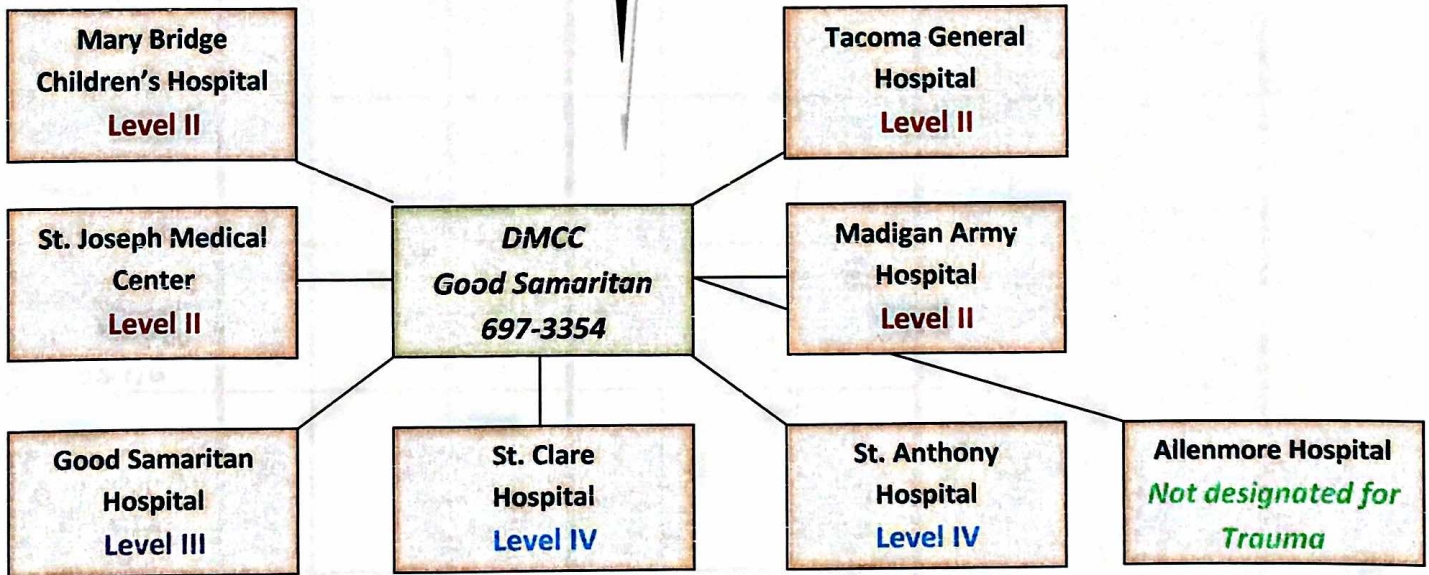


WA State & King County DMCC
 206.744.4025
 Harborview – Level I

MPI: <10 patients; Charge Nurse function

MCI: 10-50 patients; RN & ERT leads

Large Scale MCI: >50 patients or >20 'red' pts
 RN & ERT x 2; use set bed count



Thurston County DMCC
 360.438.6666
 St Pete's – Level III

****Any questions, concerns or assistance with patient placement should be directed to the on-call Tacoma Trauma physician or GS/MB base station charge physician.**

In large Scale events contact:
 PC DEM Duty Officer- 253.798.7470
 TPCHD Duty Officer – 253.878.8207 or 253.798.6500
 NWHRN Duty Officer – 425.988.2897